

spa
Enjoy



MENU

The Enjoy Spa at the Dead Sea, unparalleled in design and professionalism, is pleased to offer you a wide range of treatments for body, face and soul.

GENERAL INFORMATION:

Entrance to the spa is restricted to guests aged 16 and above.

PAYMENT:

Please arrive 10 minutes before your treatment in order to pay. We accept cash and credit cards. You can charge your room if you have left your credit card details at the hotel reception desk.

CHANGES AND CANCELLATIONS:

If you wish to cancel a treatment, you must do so four hours in advance. If you cancel within a shorter period of time, you will be charged 50% of the price of the treatment.

MEDICAL INFORMATION:

You must inform the massage therapist or the reception desk at any time if you feel that the customer's behavior is inappropriate. Treatments are done in your underwear. We advise you to shower and arrive in dry clothes.

SCHEDULING TREATMENTS:

At the spa reception desk.
Internal extension at the hotel: 9904/9902
Outside line: 08-6689904

MASSAGES

HARMONY

A treatment that combines calmness with an indulgent full-body massage and a foot massage, with the application of constant stream of warm oil to the forehead to complete the experience.

70 MIN.

NIS 480

HOT STONE MASSAGE

An experiential and pampering ancient Native American massage combining hand contact and the use of warm river stones.

60 MIN.

NIS 430

DEEP TISSUE MASSAGE

A deep and focused treatment method for relaxing muscles and points of tension in various areas of the body.

60 MIN.

NIS 460

LYMPHATIC MASSAGE

A gentle manual massage technique that stimulates the lymphatic system in order to facilitate and accelerate the flow of lymphatic fluid in the body.

50 MIN.

NIS 420

MEDICAL MASSAGE

A massage technique that emphasizes the physical aspects and aids in relieving pain, muscle relaxation, improving range of movement and general wellbeing, and is also suitable for people with a herniated disc and various problems.

50 MIN.

NIS 420

30 MIN.

NIS 300

AROMATHERAPY MASSAGE

A gentle holistic Swedish massage using natural essential oils with unique properties.

50 MIN.

NIS 380

CLASSIC SWEDISH MASSAGE

A basic classic massage that helps relax muscles and improve blood circulation, creating a sense of calm and tranquility.

50 MIN.

NIS 360

40 MIN.

NIS 300

30 MIN.

NIS 240



MASSAGES

COMBO MASSAGE

A basic classic massage that helps relax muscles and improve blood circulation, creating a sense of calm and tranquility.

50 MIN. NIS 420

CHIROMASSAGE

Facial chiromassage reduces fatigue and insomnia, activates blood circulation & lymph circulation, balances the facial muscle tone.

30 MIN. NIS 300

60 MIN. NIS 420

EXTREMITIES MASSAGE (ANTI-STRESS)

A soothing massage that relaxes accumulated tension in the muscles of the extremities: palms, feet and head.

60 MIN. NIS 420

NECK, SHOULDER AND BACK MASSAGE

Focused treatment for the upper body.

30 MIN. NIS 240

REFLEXOLOGY

A treatment method where the therapist presses on specific points on the patient's foot for balance and relaxation, affecting many areas of the body.

50 MIN. NIS 360

30 MIN. NIS 240

MASSAGE FOR PREGNANT WOMEN

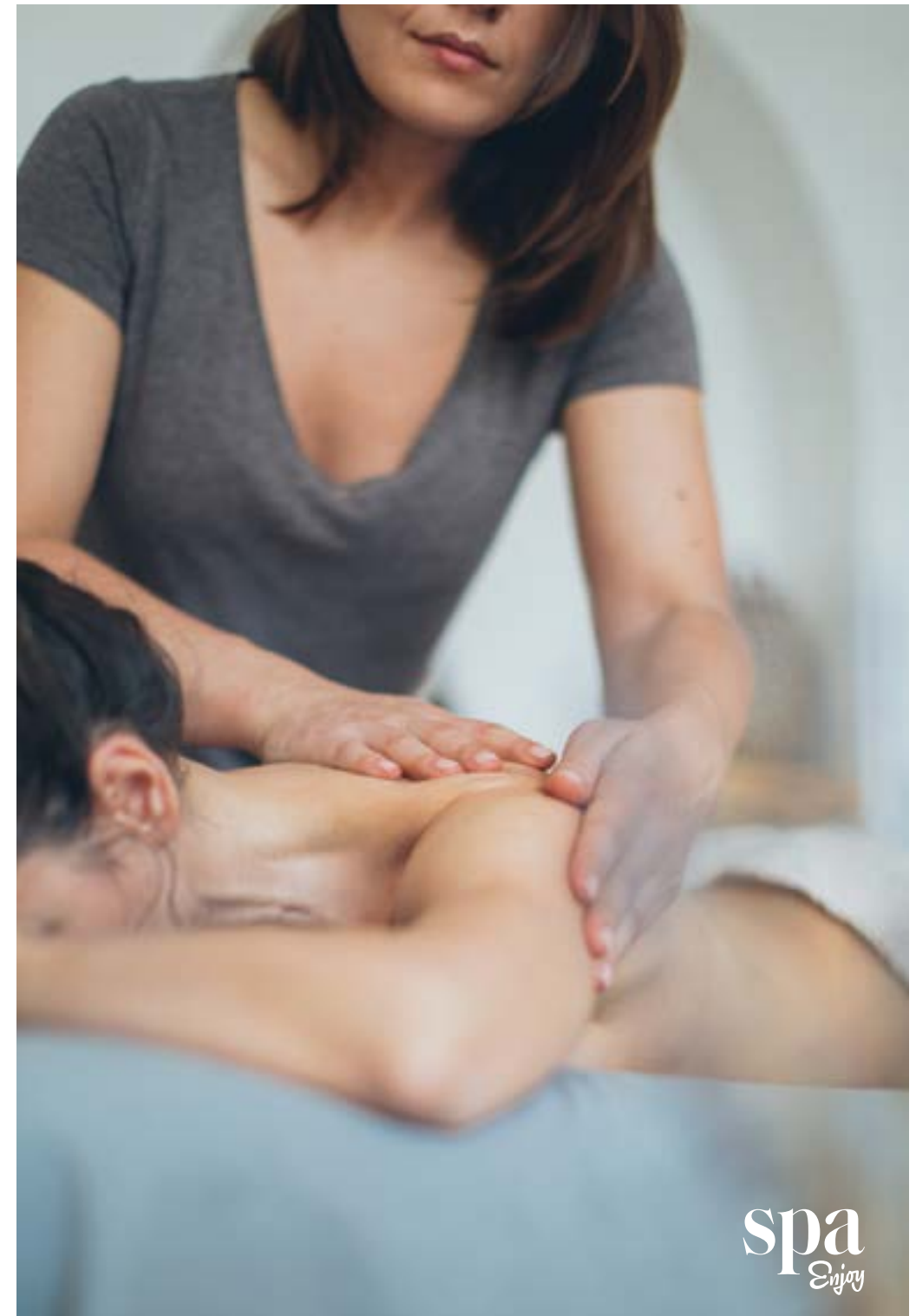
A gentle and pampering massage performed with the woman lying on her side and intended only for pregnant women in their 14-32 week.

50 MIN. NIS 360

ANTI-CELLULITE

A focused massage for the areas of cellulite combined with a massage and coffee peeling designed to eliminate excess weight and burn fat.

70 MIN. NIS 650



spa
Enjoy

FROM THE FAR EAST

AYURVEDA

A traditional treatment method that includes the application of warm sesame oil along the body and the application of a constant stream of warm oil to the forehead. Full Nude with proper covering.

70 MIN. NIS 505

ABHYANGA

An experiential treatment inspired by Indian tradition, including the application of warm sesame oil along the body.

50 MIN. NIS 360

SHIRODHARA

A face and head massage inspired by Ayurveda therapy which includes the application of constant stream of warm sesame oil to the third eye.

30 MIN. NIS 220

THAI MASSAGE

A traditional treatment method that combines stretches and slow pressure. The treatment is done on a mattress in light clothing.

70 MIN. NIS 530

50 MIN. NIS 385

THAI MASSAGE WITH OIL

A treatment based on traditional yoga technique that uses hot oil massage and focuses on tension.

50 MIN. NIS 400

SHIATSU

An ancient oriental tradition that combines physical and energetic work that includes the application of pressure along the body.

50 MIN. NIS 400

PEELING, MUD AND SEAWEED TREATMENTS

SALT PEELING

A treatment that helps open pores, remove dead cells and stimulate the circulation, providing a sensation of freshness, renewal and cleanliness.

30 MIN. NIS 240

- Includes moisturizing 40 MIN. NIS 290
- Combined with Swedish massage 60 MIN. NIS 460
- Combined with a mud wrap 60 MIN. NIS 460

COFFEE PEELING

Coffee, an active anti-oxidant, absorbs fluids and polishes the skin; it contributes to the anti-aging process and is effective in treating cellulite.

40 MIN. NIS 300

MUD WRAP

A warm mud wrap, rich in minerals, that aids in reducing joint pain and general relaxation.

30 MIN. NIS 240

- Combined with seaweed 30 MIN. NIS 350
- Combined with aloe vera 30 MIN. NIS 350
- Combined with a massage 60 MIN. NIS 460

SEAWEED WRAP

The body wrap with mineral-rich seaweed. The treatment helps replenish skin cells and restore the skin's moisture balance and elasticity.

30 MIN. NIS 300

DERMACLEAR

A medicinal herb wrap recommended for people with skin diseases.

30 MIN. NIS 330

CREO

A cold wrap enriched with vitamins, moisturizers and collagen, combined with seaweed.

20 MIN. NIS 300

PEELING, MUD AND SEAWEED TREATMENTS

CHOCOLATE WRAP

A body wrap using chocolate containing vitamins and minerals. Chocolate releases endorphins into the body, and they are responsible for feelings of elation and good mood.

40 MIN. NIS 300

TREATMENT PACKAGES FOR COUPLES

REJUVENATION FOR TWO

Classic massage

50 MIN. NIS 1200

- Body peeling
- Luxurious oil bath accompanied by fruit and wine

20 MIN.

20 MIN.

SHIZEN PACKAGE

Harmony massage. Luxurious oil bath accompanied by fruit and a bottle of wine.

70 MIN. NIS 1020

20 MIN.

EXPERIENCE FOR TWO

Classic massage. Luxurious milk bath accompanied by fruit and a bottle of wine.

50 MIN. NIS 900

20 MIN.

FACIAL TREATMENTS

UNSTRESS

Natural defying treatment for stressed skin.

Unstress is unique treatment and soothes and prevents stress. Induced skin irritation, itching and inflammation. Unstress utilizes clinically proven bioactive agents to provide DNA and cell membrane protection, reducing skin vulnerability and hilling stress induced damage. Unstress treats premature aging and brings the skin to its healthiest state, by boosting the body's natural immune system and cell defense mechanisms.

50 MIN. NIS 340

FACIAL TREATMENTS

SILK

Instant anti-aging and pamper.

60 MIN. NIS 340

The silk anti-aging treatment instantly improves wrinkles, fine lines, and skin laxity. Silk provides smooth and silky skin for special events. A calculated combination of active ingredients, Silk lifts skin and fills in wrinkles without causing irritation. After a pampering Silk treatments, clients leave the salon looking their best.

WISH

Anti-aging for mature skin (age 45+).

60 MIN. NIS 450

Wish is an innovative anti-aging treatment for mature skin that slows and reverses skin damage. Wish supplements the body's natural anti-aging mechanisms with a rich blend of active ingredients and ensures the costumers see real long term improvements in skin quality for a younger and smoother skin structure and tone.

FOREVER YOUNG

Comprehensive anti-aging (age 25-45).

70 MIN. NIS 470

Forever young prevents the symptoms of aging skin by protecting internal skin structure and correcting external symptoms of aging skin. A combination of biopeptides, botanicals and antioxidants encourage cellular regeneration and skin cell repair. Comprehensive and long lasting forever young salon and home use products deliver proven results that product, rejuvenate and support overall healthy and youthful looking skin.

EXPRESS FACIAL TREATMENT

Cleaning, massage and mask combination treatment for a healthy and better looking skin.

30 MIN. NIS 205

FACIAL TREATMENTS

COMODEX

The comprehensive treatment for oily and blemished skin.

70 MIN.

NIS 360

An innovative method incorporating scientifically proven active ingredients in advanced technological delivery system, providing a comprehensive, rapid, skin friendly, efficient solution to a variety of oily skin problems, achieving healthy and clear skin. Comodex all around treatment approach addresses the primary causes of oily and blemished skin in four well defined processes that ensure prevention of imperfections, enhance skin renewal and quality, prevent further damages and restore the skin to its healthiest state leading to proven long lasting results.

BIOPHYTO

Nature in the service of beauty.

70 MIN.

NIS 385

The world of plants has always held secrets to health and beauty, but only recently has advanced technology revealed them. BioPhyto is where science meets nature to create products with unique qualities and outstanding results in fighting off damage done to the skin. Together with clean chemistry, these advancements have enabled Christina to develop state-of-the art products that make the skin bloom again, restoring its balance, vitality and glow.

MUSE

Rejuvenation & protection for a youthful skin.

70 MIN.

NIS 385

The Muse treatment and products combine the pleasant delights of the rose together with award winning scientific formulas. Muse addresses the causes and symptoms of deterioration of the quality and condition of the skin with an effective treatment the detoxifies, nourishes and rejuvenates it. Muse — Christina's formula for younger looking. More beautiful skin that lasts much longer.





spa
Enjoy